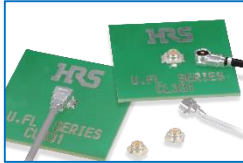


Gimbal Camera Connection

RF Cable

Frequency :
Up to 18GHz



U.FL(A) Series

Snap Lock Design

3A Max.



DF57 Series

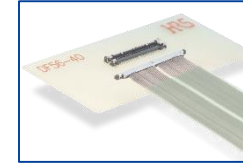
4A Max.



DF61Y Series

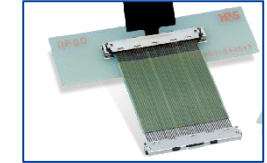
Micro Coaxial, High-Speed Transmission

Space saving
Pitch: 0.3mm

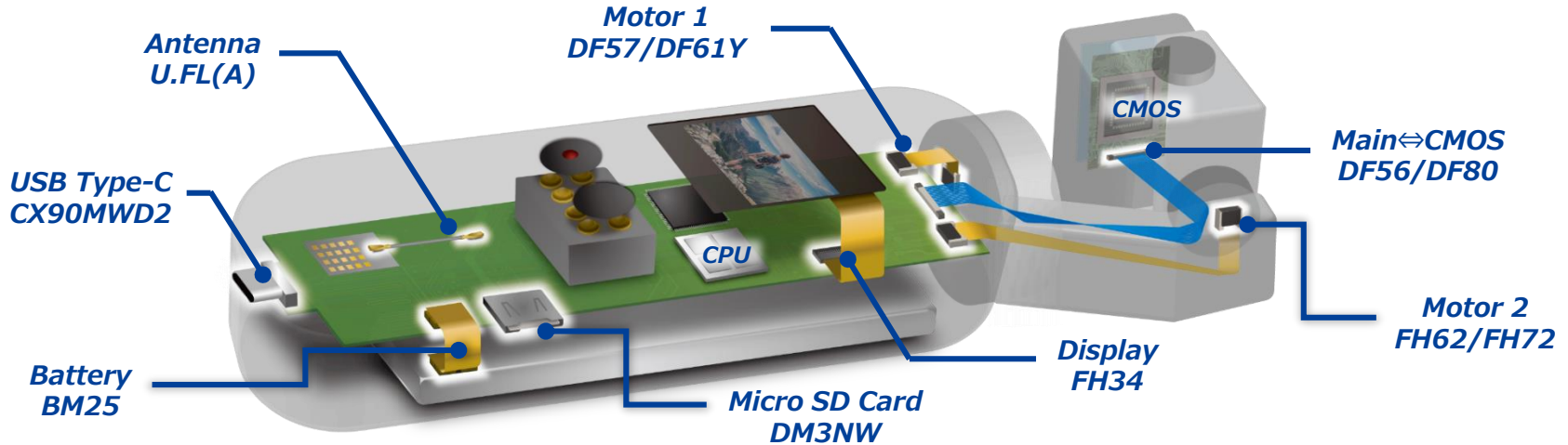


DF56 Series

Enhanced shield
Pitch: 0.5mm



DF80 Series



USB Type-C

IPX8 Waterproof

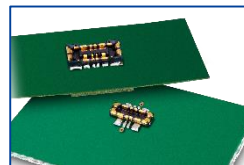


CX Series



High Current Battery Power & Signal Hybrid

Power: 10A
Height: 0.7mm



BM25 Series

Standard ZIF

Pitch: 0.5mm
Height: 1.0mm **FH**



FH34 Series

Just Insertion

Pitch: 0.25/0.3mm

OneAction FH



FH62/72 Series