

**USB Type-C
5A**



CX Series

**Right Angle, Board-to-Board
Pitch=0.4mm, High Pin Count**



FX25 Series

**Main & Mini Display
BM28 / FH34 / FH62 / FH72**

**Sub to Main PCB
FX25**

**Button/Mic/
Speaker/LED
DF57H**

**Battery
DF65/BM25**

**USB Type-C
CX90/CX60**

**Camera Module
BM28**

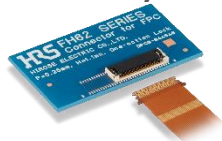


**Standard ZIF
Pitch=0.5mm**



FH34 Series

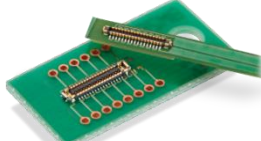
**Just Insertion
Pitch=0.25/0.3mm**



FH62/72 Series

OneAction FH™

**Space-Saving, Hybrid
Width=1.7mm**



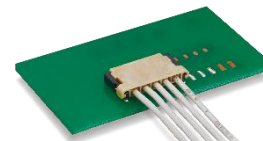
BM28 Series

**High Current Battery
10A**



BM25 Series

**Snap Lock Design
4A**



DF65 Series

**Snap Lock Design
3A**



DF57H Series

