

USB Type-C
5A

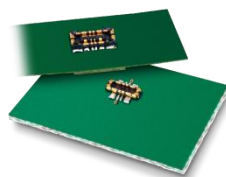


CX Series



High Current Battery

10A



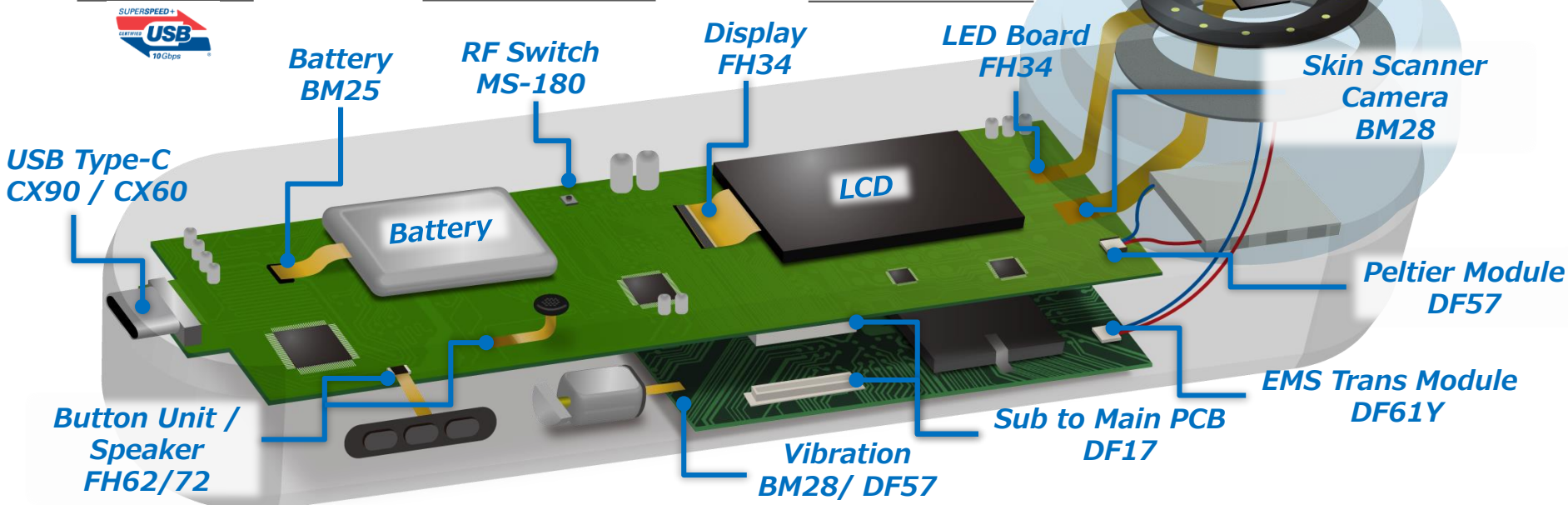
BM25 Series

Standard ZIF

Pitch=0.5mm

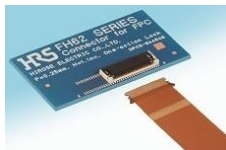


FH34 Series



Just Insertion

Pitch=0.25/0.3mm



FH62/72 Series

OneAction FH™

Wide Variation

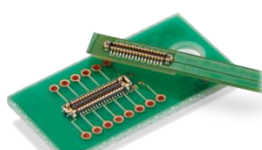
Height=4.0-8.0mm



DF17 Series

Narrow Hybrid

Width=1.7mm



BM28 Series

Snap Lock Design

4A



DF61Y Series

Snap Lock Design

3A



DF57 Series