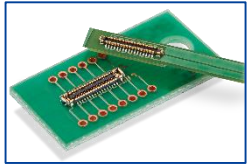


# Facial Recognition Display

## Camera / Display connection

Narrow Hybrid  
Depth: 1.7mm

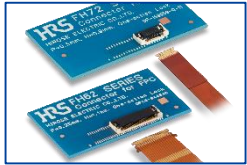


[BM28 Series](#)

## Touch panel LED B/L Side key connection

Just Insertion  
Pitch: 0.25/0.3mm

OneAction **FH**<sup>TM</sup>



[FH62/72 Series](#)

## Antenna connection

Standard ZIF  
Pitch: 0.5mm **FH**



[FH34 Series](#)

## I/O connection

USB Type-C, 5A



[CX90B1-24P](#)

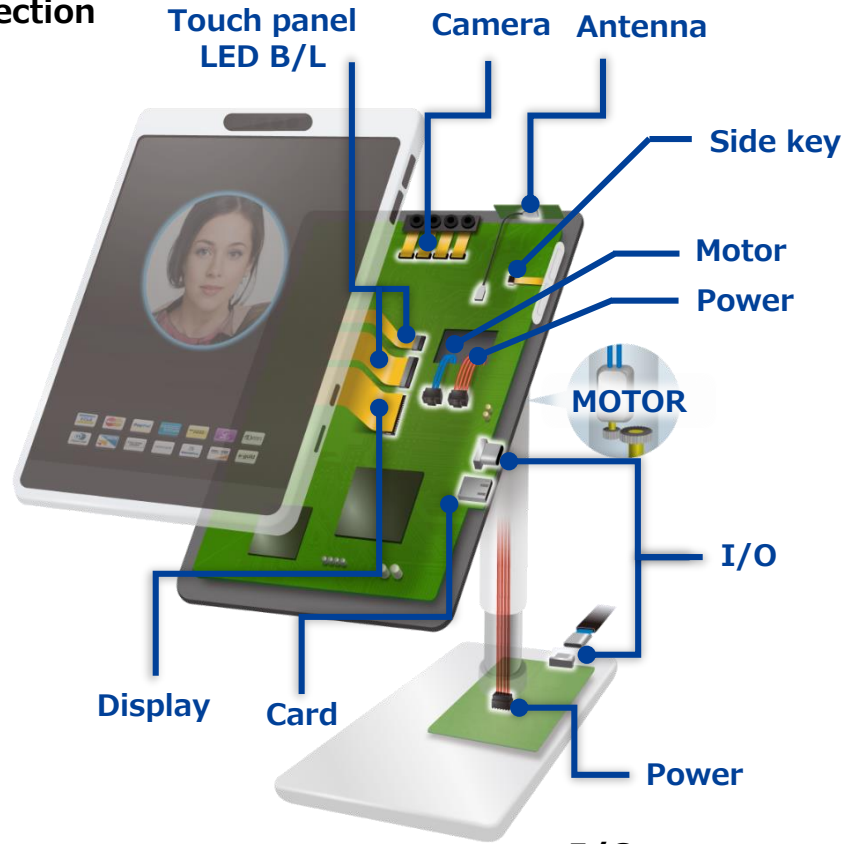


## Antenna connection

RF Cable  
Frequency: 0 to 18GHz



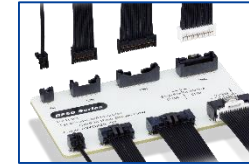
[U.FL\(A\) Series](#)



## Power / Motor connection

Pitch: 1.0mm

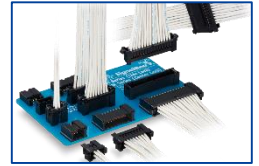
SignalBee



[DF50\(A\) Series](#)

Pitch: 2.0mm

SignalBee



[DF51\(K\) Series](#)

## Motor connection

Snap Lock, 3A

SnapBee



[DF57 Series](#)

Snap Lock, 4A

SnapBee



[DF61Y Series](#)