



Hirose Interconnects for Flexible Circuits

“Creative Links to World Electronics”

HRS Hirose
Electric
(USA), INC

A World Leader in Interconnect Technology

Hirose offers many interconnect solutions for the electronic device field. Many of these solutions have come from Hirose's years of successful design work in consumer electronics and other market segments. Hirose connectors have proven themselves in very demanding applications that call for precision, high quality and high reliability connectors. The heart of our success comes from Hirose's R&D, Engineering, and Sales divisions. These divisions work closely with the customers while keeping aware of developing connector trends in the various industries. This teamwork allows Hirose to excel in connector innovation with more compact sizes, narrower pitches and higher performing connectors.

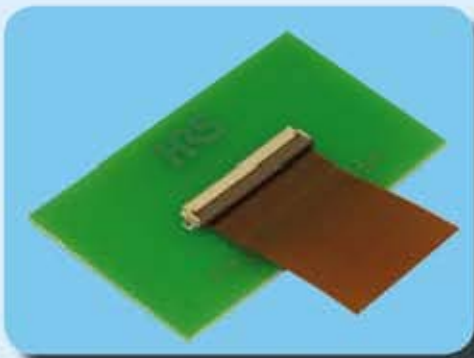
Flexible Circuit Connectors

Hirose's FH series connectors are designed for Flexible Printed Circuit (FPC) or Flat Flex Cable (FFC) type connections. We have contact pitches ranging from 0.3mm to 1mm. Most connectors in this series are available in a bottom contact point, but top contact points are also available in select products. Typical applications are to connect LCD's to printed circuit boards and Board-to-Board connections.

For detailed information on the complete line of FH series connectors, please go to the following URL:

www.HiroseUSA.com/FHseries.asp

All parts on this brochure are *RoHS Compliant.



FH12 Series

Pitch: 0.5 and 1mm

Contact point: Top or Bottom

Insertion force: ZIF

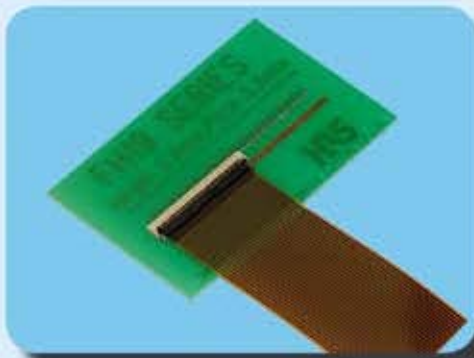
Mounting styles: Horizontal and Vertical

FPC thickness: 0.12, 0.18 and 0.3mm

Connector heights: 2, 2.4 and 4.85 (vertical)

Contact positions: 4,5,6,7,8,9,10,11,12,13,14,15,16,17,18,19,20,22,24,
25,26,28,29,30,32,33,34,35,36,40,42,45,49,50,53,60

Actuator Style
"Front" Flip Lock



FH19C/ FH19SC Series

Pitch: 0.5mm

Contact point: Top or Bottom

Insertion force: ZIF

Mounting style: Horizontal

FPC thickness: 0.2mm (FH19C) or 0.3mm (FH19SC)

Connector height: 0.9mm

Contact positions: 4,5,6,7,8,9,10,12,13,14,15,16,17,18,20,
21,22,24,26,27,28,30,32,34,40,45,50

Actuator Style
"Front" Flip Lock



FH23 Series

Pitch: 0.3mm

Contact point: Bottom

Insertion force: LIF

Mounting style: Horizontal

FPC thickness: 0.2mm

Connector height: 1.25mm

Contact positions: 15,17,21,23,25,27,31,33,37,39,45,51,61,71

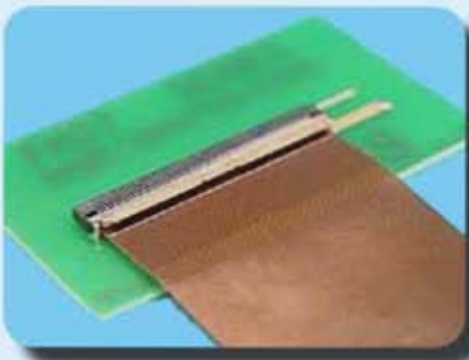
Actuator Style
"Front" Flip Lock



FH26 Series

Pitch: 0.3mm
Contact point: Bottom
Insertion force: ZIF
Mounting styles: Horizontal
FPC thickness: 0.2mm
Connector height: 1.0mm
Contact positions: 13,15,17,21,23,25,27,29,31,33,
35,37,39,41,45,51,55,57,61,71

Actuator Style
"Front" Flip Lock



FH27 Series

Pitch: 0.4mm
Contact point: Bottom
Insertion force: ZIF
Mounting styles: Horizontal
FPC thickness: 0.4mm
Connector height: 1.2mm
Contact positions: 10,40,50,54,57,60

Actuator Style
"Front" Flip Lock



FH28 Series

Pitch: 0.5 and 1.0mm
Contact point: Bottom
Insertions force: ZIF
Mounting style: Horizontal
FPC thickness: 0.3mm
Connector height: 2.55mm
Contact positions: 10,20,28,30,40,45,50,
55,60,64,68,74,80

Actuator Style
"Front" Flip Lock



FH34S Series

Pitch: 0.5mm
Contact point: Top
Insertion force: ZIF
Mounting style: Horizontal
FPC thickness: 0.3mm
Connector height: 1mm
Contact positions: 4,6,7,8,11,14,16,20,
22,24,26,30,32,34

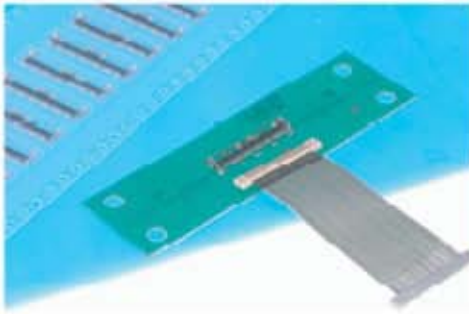
Actuator Style
"Back" Flip Lock



FH35 Series

Pitch: 0.3mm
Contact point: Top
Insertion force: ZIF
Mounting style: Horizontal
FPC thickness: 0.2mm
Connector height: 0.9mm
Contact positions: 19,25,27,31,33,
35,41,45,49,51

Actuator Style
"Back" Flip Lock



Hirose Electric is a leading, global interconnect manufacturer specializing in a wide range of solutions for advanced technologies.

We have connectors for: automotive, fiber optic, circular, power, mobile/ cellular telephones, board-to-board, wire-to-board, microwave, telecom, flex circuit (FPC/FFC), memory card connectors, ribbon cable, mini/micro USB, HDMI and other connectors.



World Headquarters
Hirose Electric Co., Ltd
5-23 Osaki 5-Chome
Shinagawa-Ku, Tokyo 141-8587 Japan
T:81-3-3492-3293
F:81-3-3493-2933



US Headquarters
Hirose Electric (USA), Inc.
2688 Westhills Court
Simi Valley, CA 93065
T:805-522-7958
F:805-522-3217

No. Cal. Regional Office
Hirose Electric (USA), Inc.
20400 Stevens Creek Blvd.
Suite 250
Cupertino, CA 95014
T:408-253-9640
F:408-253-9641



www.hiroseusa.com

Hirose is an ISO 9001 company